

RESTORATIVE DENTAL PRODUCTS



**PRO-TEMP III
GARANT KIT**
Includes
dispensers and
cartridge with tips
DTP46201

PRO-TEMP III
Replacement
Cartridge with tips
(21)
DTP46246

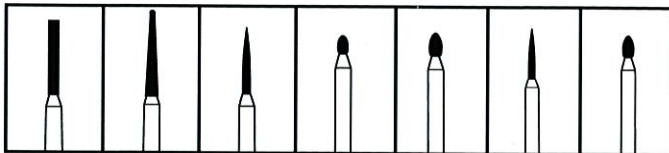


CONSIL CERAMIC – Consil Bioglass, 2x2.5cc box
DTP10672

This is a composite which is used to construct stabilizing occlusal splints for noninvasive mandibular fracture reduction. There are many uses such as: avulsion and luxation; symphyseal fracture reduction; turtle shell repair; bird beak fractures; bird beak alignment or occlusion correction. Also, to correct Base Narrow Lower Canines in dogs. Stronger, faster, easier to use than acrylics. Sets in 90 seconds.

A unique bioactive ceramic for the regeneration of bone loss due to periodontal disease and tooth extraction. New bone production in 4 weeks with bending strength and stiffness in 3 months. Easy to use and mixes with patient's blood or sterile saline. Cost effective, you will get up to 10 procedures per box.

FRICITION GRIP DIAMOND BURS



From Left to Right

- DTP7127C – Neodiamond Burs, Flat End Cylinder (Coarse)
 - DTP1610C – Neodiamond Burs, Round End Taper (Coarse)
 - DTP1610F – Neodiamond Burs, Round End Taper (Fine)
 - DTP5128C – Neodiamond Burs, Flame (Coarse)
 - DTP5128M – Neodiamond Burs, Flame (Medium)
 - DTP5128F – Neodiamond Burs, Flame (Fine)
 - DTP1908C – Neodiamond Burs, Egg (Coarse)
 - DTP1908F – Neodiamond Burs, Egg (Fine)
 - DTP1923M – Neodiamond Burs, Football (Medium)
 - DTP128VF – Neodiamond Burs, Flame (Very Fine)
 - DTP390VF – Neodiamond Burs, Egg (Very Fine)
- All Neodiamond Burs (5 per pack)

Diamond burs have a variety of uses, including crown preparation, shaping composite restorations, preparing sites for restorative materials, and smoothing bone in surgical sites prior to closure. One advantage is that they do not tend to catch and tear the soft tissues as do most other burs. The flat end cylinder burs are particularly useful for smoothing bone. A selection of grits allows for progressive refinement of the area you are working on. Diamond burs tend to have a much longer useful life than carbide burs. This selection represents the most popular shapes in veterinary dentistry. Total length never exceeds 22mm.

ADDITIONAL BURS

RA (Latch Type) BUR (5 per pack)

- DTP10036 – #700
 - DTP10038 – #701
 - DTP10042 – #702
 - DTP10059 – #1/2
 - DTP10060 – #2
 - DTP10064 – #4
 - DTP10066 – #6
 - DTP10068 – #8
 - DTP10040 – #33-1/2
 - DTP10067 – #35
- Dentalaire Starter Bur Pack with
10 assorted RA (Latch type) Burs
DTP20201 – Pk. of 10

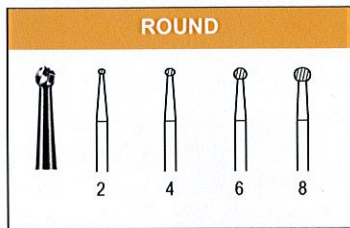
HANDPIECE BURS (5 per pack) (For Low Speed)

- | | |
|------------------|---------------|
| DTP10070 #700 | Handpiece Bur |
| DTP10071 #701 | Handpiece Bur |
| DTP10072 #702 | Handpiece Bur |
| DTP10073 #1/2 | Handpiece Bur |
| DTP10074 #2 | Handpiece Bur |
| DTP10075 #4 | Handpiece Bur |
| DTP10076 #6 | Handpiece Bur |
| DTP10077 #8 | Handpiece Bur |
| DTP10078 #33-1/2 | Handpiece Bur |
| DTP10079 #35 | Handpiece Bur |

FRICTION GRIP BURS/ SURGICAL LENGTH BURS

Many types of burs are available. The cross-cut fissure bur (699, 700, 701, 701L, 702) is a good all-purpose bur that can be used to section teeth and gain endodontic access. It is also useful as a general purpose bur. The round bur (1/2, 1, 2, 3, 4, 6, 8) is used to gain endodontic access, to prepare cavities, and to mark the cutting depth in crown preparation. The inverted-cone bur (33-1/2, 34, 35, 37) is used for undercutting cavity preparation to create a mechanical interlock. The pear-shaped bur (330, 331, 332) is used for root canal access and for undercutting dentin.

ALL BURS COME IN PACKS OF 5



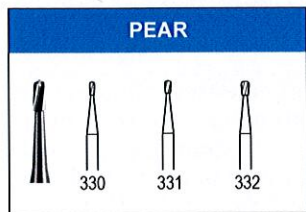
FRICTION GRIP BURS (16mm.)

- DTP10046 – Round Bur #1/2
- DTP10047 – Round Bur #1
- DTP10048 – Round Bur #2
- DTP10050 – Round Bur #3
- DTP10052 – Round Bur #4
- DTP10054 – Round Bur #6
- DTP10056 – Round Bur #8
- DTP10201 – 10 Assorted Burrs with Burr Block, includes #6, #8, #330, #332, #557, #558, #699, #700, #701, #702

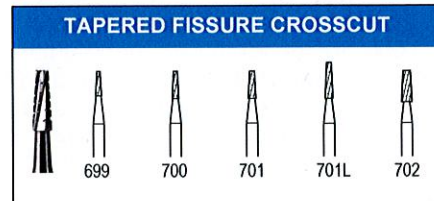
SURGICAL LENGTH BURS (25mm.)

(Useful in big dogs with big teeth)

- DTPFGSL2 – Surgical Length FG. #2
- DTPFGSL4 – Surgical Length FG. #4
- DTPFGSL557 – Surgical Length FG. #557
- DTPFGSL558 – Surgical Length FG. #558
- DTPFGSL6 – Surgical Length FG. #6
- DTPFGSL701 – Surgical Length FG. #701
- DTPFGSL702 – Surgical Length FG. #702
- DTPFGSL8 – Surgical Length FG. #8

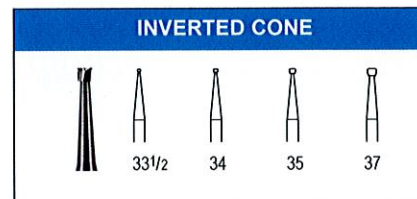


- DTP10033 – Cone Shape #33-1/2
- DTP10034 – Cone Shape #34
- DTP10035 – Cone Shape #35
- DTP10037 – Cone Shape #37



- DTP10017 – Pear Shape #330
- DTP10018 – Pear Shape #331
- DTP10020 – Pear Shape #332

- DTP10021 – Cross Cut Fissure #557
- DTP10019 – Cross Cut Fissure #558

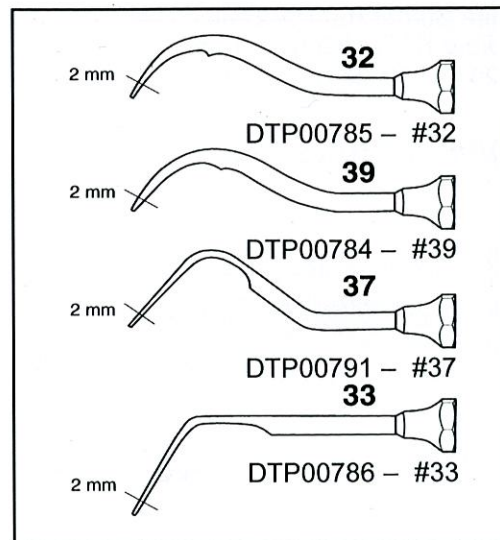


- DTP10025 – Cross Cut #699
- DTP10026 – Cross Cut #700
- DTP10028 – Cross Cut #701
- DTP10030 – Cross Cut #701L
- DTP10032 – Cross Cut #702

REPLACEMENT TIPS

FOR ULTRASONIC, MEGASONIC, AND ALL AIR SCALERS

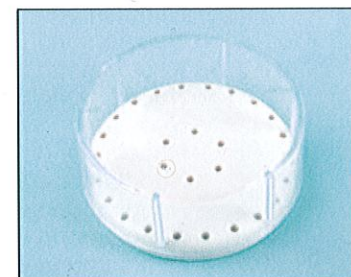
TIP DIAGRAM



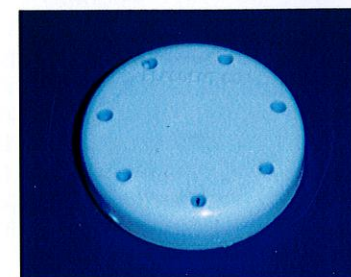
The #32 is for heavy duty scaling, the #39 is for fine or delicate scaling, the #33 and #37 are for subgingival scaling.

- DTP10880 – Cavitron Insert 25K (Fine)
- DTP10881 – Cavitron Insert 30K (Fine)
- DTP10879 – Cavitron Insert 25K (Wide)
- DTP100UN – Megasonic Tip (Universal)
- DTP100FL – Megasonic Tip (Flat)
- DTP100PR – Megasonic Tip (Perio)
- DTP100CT – Catheter Tip f/ Megasonic
- DTP100TW – Tip Wrench f/ Megasonic
- DTP10876 – Star Titan Universal Tip
- DTP10877 – Star Titan Perio Tip
- DTP10878 – Star Titan Rebuild Kit
- DTP10882 – Sonix, Lynx, Airstream (Universal)
- DTP10883 – Sonix, Lynx, Airstream (Perio)
- DTP10884 – Sonix, Lynx, Airstream (Sickle)
- DTP10870 – Tip for Air Scaler (Sickle)
- DTP10875 – Tip for Air Scaler (Universal)
- DTP00576 – Replacement Spindle for Air Scaler
- DTP10872 – Tip for Air Scaler (Perio)
- DTP10885 – Sonus V Stack with Nosecone
- DTP10886 – Universal Tip to Sonus V Stack
- DTP10887 – Flat Tip to Sonus V Stack
- DTP00784 – Universal Tip #39
- DTP00785 – Flat Tip #32
- DTP00786 – Special / Perio Tip #33
- DTP00791 – Interproximal #37

MAGNETIC BUR BLOCK ROUND



With cover - Holds 28 burs
DTP10204



DTP10205 Holds 7 burs